

MONTHLY MEMBERSHIP PROGRESS REPORT

LOCATION ILLINOIS

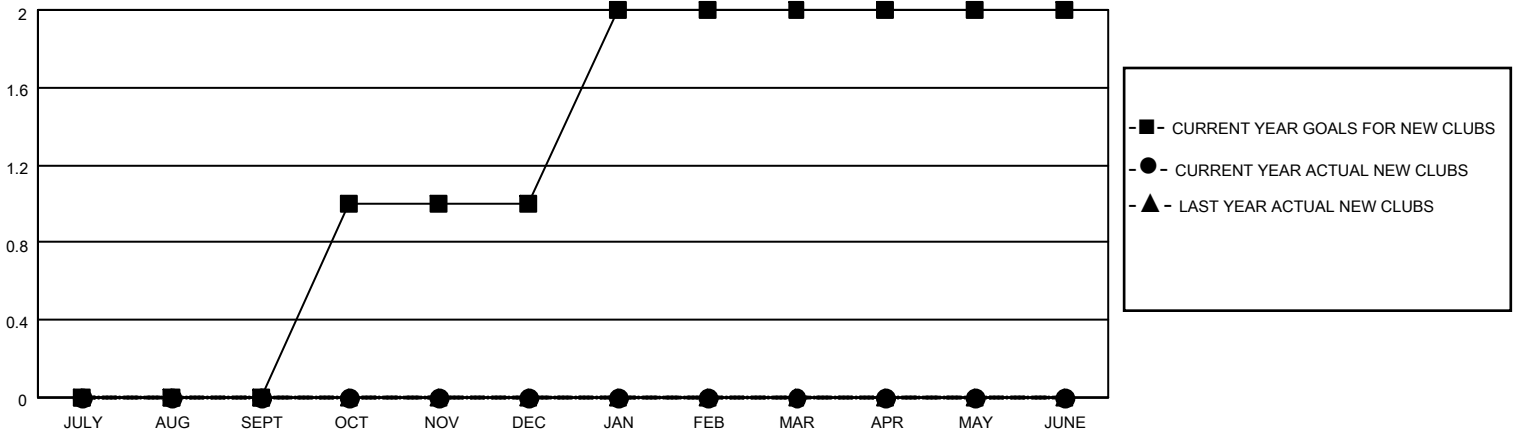
District 1 M

Results as of: 5/31/2021

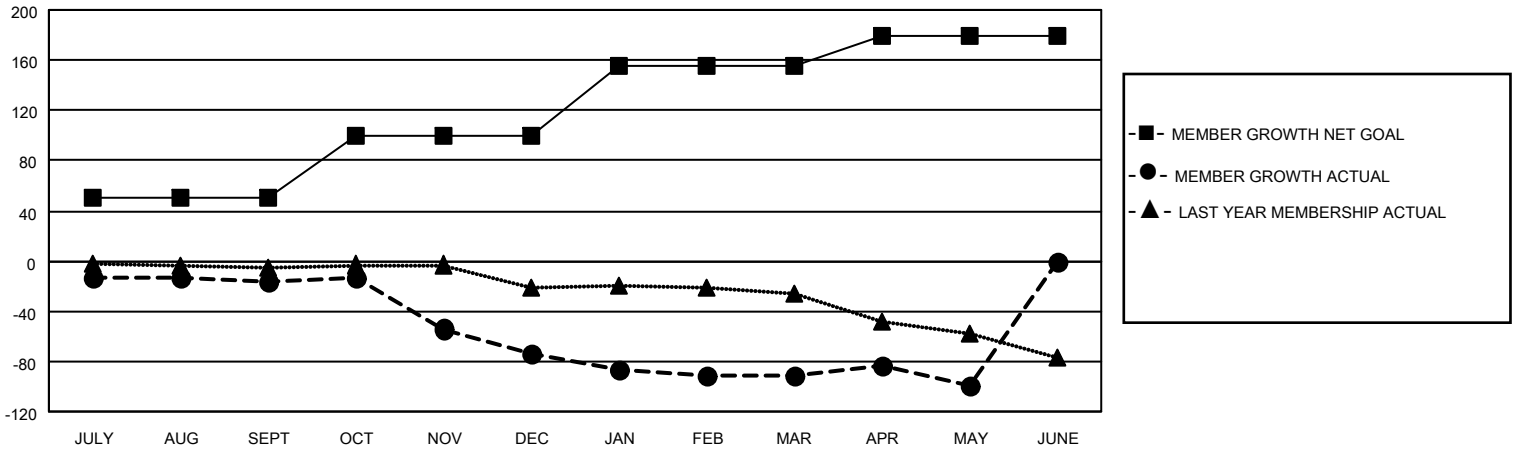
Clubs			
RESULTS FOR 2020-2021			
QUARTER	NEW CLUB GOAL	NEW CLUBS	DROPPED CLUBS
JULY/AUG/SEPT	0	0	0
OCT/NOV/DEC	1	0	1
JAN/FEB/MAR	1	0	0
APR/MAY/JUNE	0	0	0

Members			
RESULTS FOR 2020-2021			
QUARTER	MEMBER GROWTH NET GOAL	MEMBER GROWTH ACTUAL	DROPPED MEMBERS ACTUAL (including transfers)
JULY/AUG/SEPT	50	21	36
OCT/NOV/DEC	50	22	79
JAN/FEB/MAR	55	20	37
APR/MAY/JUNE	25	21	26

GOALS AND ACTUAL NEW CLUBS CUMULATIVE



GOALS AND ACTUAL MEMBERS CUMULATIVE



DROPPED CLUBS: 1	
DROPPED MEMBERS	
DECEASED	30
CLUB CANCELLED	38
OTHER	110
TOTAL	178

23 CLUBS OF 59 ADDED 1 OR MORE NEW MEMBERS

<u>GENDER DISTRIBUTION</u>	
MALE	1,125 (80.24%)
FEMALE	277 (19.76%)

[CLICK HERE FOR CUMULATIVE MEMBERSHIP DATA](#)

TOTAL FAMILY UNIT MEMBERS	151
FAMILY MEMBERS PAYING HALF DUES	76